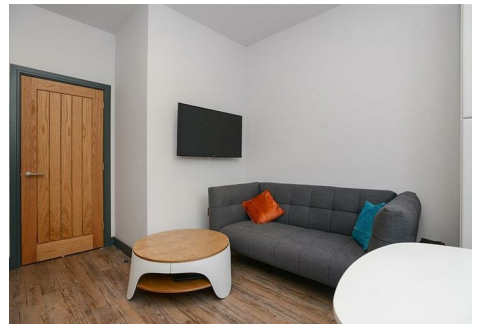




MULBERRY - LANE
ESTATE & LETTING AGENCY



10 Park Suites 5-7 Waverley Street, Aboretum, Nottingham, Nottinghamshire, NG7 4LE £242 Per week

- Available Academic Year 2026/2027
- Including Gas, Electric, Water and the Internet, subject to fair usage.
- Secure Gated Development
- Stylish
- EPC C
- £242PW
- Luxury Accommodation
- Available June 2026
- Council Tax B

10 Park Suites 5-7 Waverley Street, Nottingham NG7 4HF

**CITY CENTRE APARTMENT AVAILABLE JUNE 2026/2027

Spacious 1 bedroom apartment at only £242.00 PW

INCLUSIVE of Electric, Water and the Internet, subject to fair usage.

Mulberry Lane Estates and Lettings are proud to bring this 1 double bedroom apartment to the market, not to be missed.

Available for the 2026/2027 academic year for £242.00.00 PW including electric, water and internet.

Park Suites is First Class luxury accommodation for Students of Nottingham.

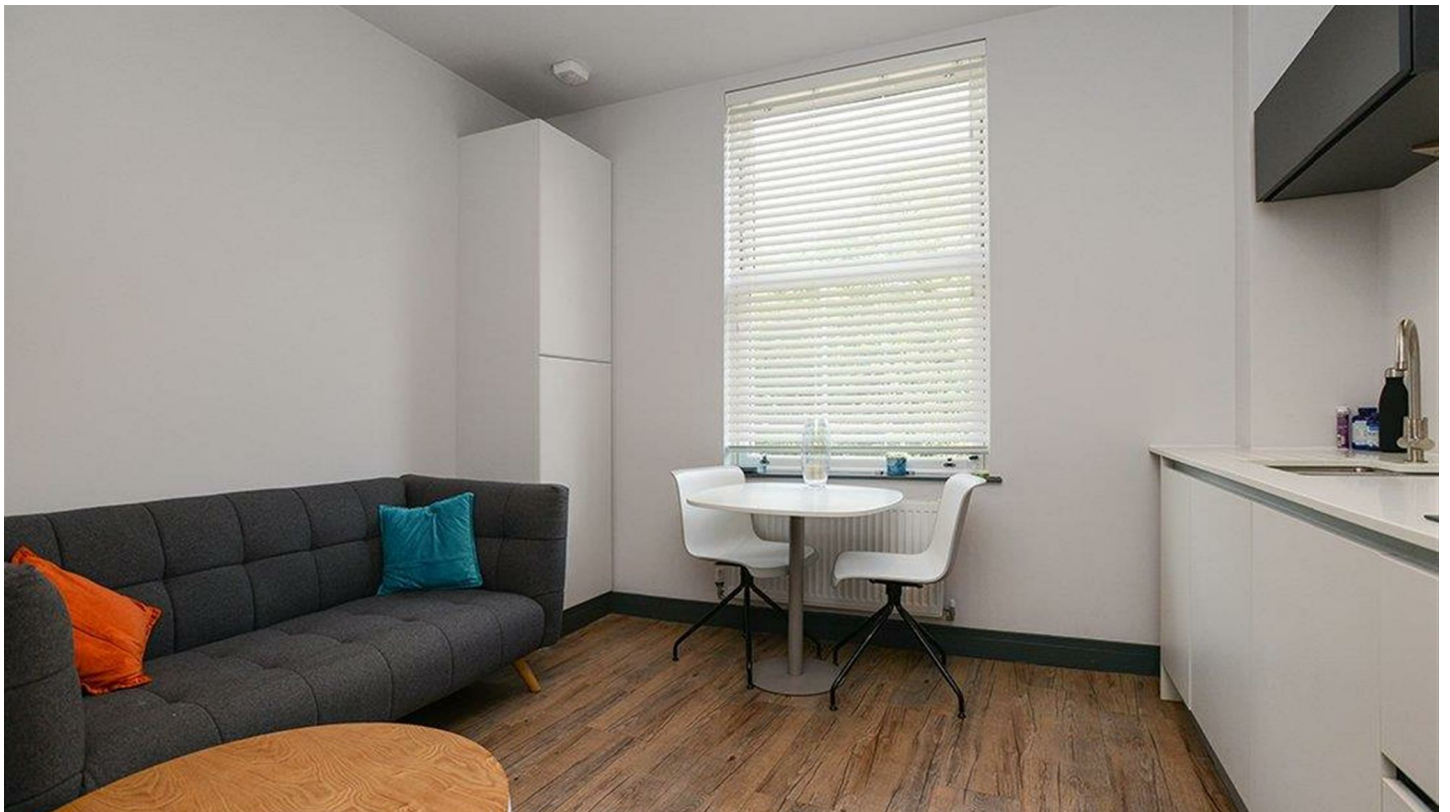
Just 2 minutes walk to the NTU City Campus and the City Centre.

Dont miss out!

Call Mulberry Lane now to arrange a viewing!



Council Tax Band: B



About

Stylish gated one bedroom apartment minutes from NTU City Campus and Nottingham City Centre, available for the 2026/2027 Academic Year!

Lounge/Kitchen

A modern open plan kitchen and lounge benefits from integrated appliances including oven, hob, dishwasher, washer/dryer and Fridge/Freezer, there is a wall mounted tv in the lounge area for cosy evenings.

Bedroom

stylish double bedroom is finished with double bed, mattress, wardrobe, bedside table, desk and chair and also a wall mounted TV.

Shower Room

Finished to a high standard, with a large shower, sink and WC.



Directions

Viewings

Viewings by arrangement only. Call 01157042554 to make an appointment.

EPC Rating:

C

Energy Efficiency Rating		Current	Potential
Very energy efficient - lower running costs			
(92 plus) A			
(81-91) B			
(69-80) C		77	
(55-68) D			
(39-54) E			
(21-38) F			
(1-20) G			
Not energy efficient - higher running costs			
England & Wales		EU Directive 2002/91/EC	